

ACUTE ORAL TOXICITY FROM A FRACTION RICH IN PHENOLIC COMPOUNDS FROM THE LEAF EXTRACT OF *Swietenia macrophylla* KING IN A MURINE MODEL

DETERMINACIÓN DE LA TOXICIDAD AGUDA ORAL DE UNA FRACCIÓN RICA EN COMPUESTOS FENÓLICOS DEL EXTRACTO DE HOJAS DE *Swietenia macrophylla* KING EN UN MODELO MURINO

Ana María HENAO-DUQUE^{1*}, Berardo de Jesús RODRÍGUEZ², Jaime Andrés PEREAÑEZ^{1,5}, Tatiana LOBO-ECHEVERRI³, Vitelbina NÚÑEZ RANGEL^{1,4}

Recibido: Agosto 13 de 2016. Aprobado: Marzo 28 de 2017

ABSTRACT

Background: The mahogany tree (*Swietenia macrophylla* King) is widely used in traditional medicine, especially its seeds, which are used in Malaysia, Indonesia and some countries of South America. Recently an active fraction of the leaf ethanolic extract (labelled “Sm13-16,23”), showed promising results against some toxins of South American pit vipers. **Objectives:** In this study the aim was to evaluate the acute oral toxicity of fraction Sm13-16,23 from the leaf ethanolic extract, using Swiss Webster mice. **Methods:** Fraction Sm13-16,23 was administered orally in a single dose to 2000 mg/kg and 300 mg/kg, clinical follow-up for 14 days was performed and then euthanasia, necropsy and histopathology of organs were performed. **Results:** Overall, there were not deaths recorded during the study period. Further not signs of toxicity in doses of 300mg/kg were observed, but at doses of 2000 mg/kg, histopathological lesions in the liver, as karyomegaly and binucleation were observed. **Conclusions:** Fraction Sm13-16, 23 does not produce toxicity lesion at doses of 300mg/kg, indicating that the acute oral toxicity risk is low.

Keywords: Leaf extract; oral; pathology; *Swietenia macrophylla*; toxicology.

RESUMEN

Antecedentes: El árbol de la caoba (*Swietenia macrophylla* King) es utilizado ampliamente en la medicina tradicional, especialmente sus semillas, que son usadas en Malasia, Indonesia y algunos países de Suramérica. Recientemente una fracción activa del extracto etanólico de las hojas (llamada “Sm13-16,23”), demostró resultados promisorios frente algunas toxinas de las víboras suramericanas. **Objetivos:** En este estudio se evaluó la toxicidad aguda oral de la fracción Sm13-16,23 del extracto etanólico de las hojas de *S. macrophylla* utilizando ratones Swiss Webster. **Métodos:** La fracción Sm13-16,23 se administró vía oral

¹ Programa de Ofidismo / Escorpionismo, Universidad de Antioquia. Medellín, Colombia.

² Grupo de investigación en Patobiología Quiron. Facultad de Ciencias Agrarias, Universidad de Antioquia, Medellín, Colombia.

³ Grupo de Química de los Productos Naturales y los Alimentos, Escuela de Química, Facultad de Ciencias, Universidad Nacional de Colombia, Sede-Medellín., Medellín, Colombia.

⁴ Escuela de Microbiología, Universidad de Antioquia. Medellín, Colombia.

⁵ Facultad de Ciencias Farmacéuticas y Alimentarias. Universidad de Antioquia. Medellín, Colombia.

* Author of Correspondence: ana.h.cat@gmail.com

como dosis única a 2000 mg/kg y 300 mg/kg, se realizó seguimiento clínico de los animales durante 14 días y finalmente se les aplicó la eutanasia. Se practicó la necropsia de cada animal y se tomaron algunos órganos para su evaluación histopatológica. **Resultados:** No se registraron muertes durante el tiempo de estudio, ni se evidenciaron signos de toxicidad a dosis de 300mg/kg, sin embargo, a la dosis de 2000 mg/kg, se encontraron lesiones histopatológicas en el hígado; como cariomegalia y binucleación de los hepatocitos. **Conclusión:** La fracción Sm13-16,23 no produjo lesiones de toxicidad a dosis de 300mg/kg, lo que indicia que el riesgo de toxicidad aguda oral es bajo.

Palabras clave: Extracto de plantas; oral; patología; *Swietenia macrophylla*; toxicología.

INTRODUCTION

The Mahogany tree (*Swietenia macrophylla* King), which can usually reach 40 to 60 meters, belongs to the Meliaceae family and has a tropical distribution found in Central and South America, in Western India, in Malaysia and in the central and southern China (1,2). This plant is used in Asia for the treatment of various diseases based on their antimicrobial effects, anti-inflammatory, antioxidant, anti-mutagenic, anti-cancer, anti-tumor and anti-diabetic activities (2). Its seeds have many uses, such as in the traditional treatment of hypertension, diabetes and to relieve pain in Malaysia, to treat leishmaniosis and to induce abortion in Bolivia, as well as for the treatment of diabetes, hypertension and malaria in Indonesia. In addition, its bark is used as an astringent for wounds and occasionally for sun tanning (2-6).

Phytochemical studies of the acetone-soluble, ethanolic, and methanolic extracts have shown that limonoids and its derivatives are the main constituents of *S. macrophylla*. Limonoids derived from tetracyclic triterpenes eufol like (H-20 β) or tirucalol (H-20 α) by a series of oxidative changes, interspersed with molecular rearrangements (7). Most of the limonoids that have been evaluated were obtained from seed extracts (8). In the leaves of this species carbohydrates, free or combined flavonoids, sterols and/or triterpenes, hydrolyzable and condensed tannins, essential oils as Himacaleno- γ , germacrene-D, germacrene-A, diene-1,4-Cadina, decahexanoic acid and ethyl hexadecanoate have been reported. Also limonoids, pragmaline type, from the leaf dichloromethanolic extract, called "Swietephragmine" HJ (1-3) and "Swietemacrophine" were described. From its bark three compounds with antioxidant activity were reported, namely, phenylpropanoid substituted catechin (Swietemacrophilanine),

catechin, and epicatechin; all of them with antioxidant activity (9-11).

With the leaf ethanolic extract of *S. macrophylla*, promising results were obtained in an *in vitro* study by inhibiting myotoxic phospholipases A₂ (PLA₂) and Crotoxin from the venom of South American pit vipers (*Bothrops asper*, *Bothrops atrox* and *C. durissus cumananensis*). In addition, this extract did not show toxicity to cultured muscle cells. In this same study, it was reported that polar fractions derived from the leaf ethanolic extract were rich in phenolic compounds (12,13), which are suggested to be involved in the inhibitory activity of phospholipase A₂ as previously described (14). In a subsequent study where a bioassay-guided fractionation was carried out with the ethanolic leaf extract of *S. macrophylla*, the activity of several fractions against PLA₂s from *B. atrox*, *B. asper* and *C. durissus cumananensis* *in vitro* and *in vivo* were evaluated. One of the most polar fraction, named "Sm13-16,23", exhibited an inhibition of the mentioned PLA₂ higher than 80% (15). These kind of results are promising in the search for adjuvants for the treatment of snakebite accidents. However further studies are required in order to establish the toxicity of promising samples before recommending its use.

In the present study, based on previous studies that have reported that some polyphenols have *in vitro* and *in vivo* inhibitory activities of the venoms of Elapids and Vipers snakes, (16,17,18,19), and considering the promising inhibitory results obtained previously with fraction "Sm13-16,23" derived from *S. macrophylla* (15), the aim of this study was to determine the acute oral toxicity of this fraction. Although there are publications about the toxicity of this plant, they have been assessed only in seed extracts, possibly because it is most used in traditional medicine. However, the leaves toxicity is unknown, which led to the purpose of this study in order to complement previous results.

MATERIALS AND METHODS

Plant material

Fraction “Sm13-16,23” was obtained by a bioassay-guided fractionation of the leaf ethanolic extract of *S. macrophylla* (15), which was previously collected on campus of the National University of Colombia, located in Medellin (Voucher sample, TL-103). Briefly, air-dried and milled leaves were extracted by percolation with ethanol. The resultant ethanolic extract was fractionated by a silica-gel open column eluted with a gradient of organic solvents, which resulted in 22 fractions, from which fractions 13 to 16 were pooled based on its chromatographic profile and its bioactivity. The combined fractions F13 to F16 were fractionated by silica gel as well, resulting in 30 subfractions, from which subfraction 23 was the most active inhibiting the PLA₂. This subfraction was labelled as “Sm13-16,23”. In further characterization, studies 2-3 compounds were observed in analytical HPLC (Shimadzu), from which polyphenolic compounds were detected by the presence of typical signals for hydroxyl and aromatic rings through IR and UV spectral data (15).

This sample was kept frozen until bioassays. For biological analysis it was diluted in ethanol and placed in a vortex for three minutes, then brought to ultrasound for seven minutes, filtered using a 0.2 μ m membrane and dried in SpeedVac (Vacufuge plus, Eppendorf). Afterwards it was diluted in a sterile saline solution (SSF) 0.9% (Baxter, Colombia), vortexed for three minutes, and brought to the ultrasound seven minutes again before administration to animals.

Experimental animals

This study was approved by the Ethics Committee for Animal Experimentation (CEEA) of the “Universidad de Antioquia” (Act Nro.87 of January 30, 2014). Conventional Swiss Webster mice between 20 to 25 grams body weight were used. The animals belonged to Animal House Department of “Universidad de Antioquia” Research Place, remained with artificial light, 12 hours photoperiod, temperature of 22 ± 1 °C and relative humidity of $60 \pm 4\%$. Before each experiment a five days acclimatization period was made.

Acute oral toxicity

To determine the acute oral toxicity of the extract, the parameters described in the guide No. 423 of 2001 of the Organization for Economic Cooperation and Development (OECD) were followed (20). Five mice as treatment group and five mice as control group were used. Two assays were made, the first at a dose 2000 mg/kg and the second with a lower dose of 300 mg/kg. The treatment group received 0.2 mL SSF with the diluted “Sm13-16,23” fraction, which was administered by gavage. The control group received only 0.2 mL of SSF. Prior to gavage, mice were maintained in a four hours fast, which lasts up to an hour after the treatment administration. All animals were observed continuously for the first hour, then daily for 14 days. Daily monitoring of behavior, weight and medical condition of each mouse was performed. The consciousness, body condition, the presence of piloerection, lethargy, stupor or other alterations in the organic system, was evaluated. Finally, on day 14 an overdose of CO₂ euthanasia was performed.

Histopathological analysis

Necropsy of all animals was performed and macroscopic findings were detailed. Stomach, small intestine, colon, spleen, liver, lungs, kidneys, heart, brain, and gastrocnemius muscle were sampled. Tissue samples were fixed in 10% buffered formalin, embedded in paraffin and cut into 4 μ m thick. All tissues were stained with Hematoxylin Eosin (H-E) (21). For histopathological analysis, sections were evaluated under an optical microscope Leica DMLB (Meyer Instruments, Houston, TX, USA) and a semi-quantitative assessment of lesions were given (Table 1). All samples were processed and analyzed in the laboratory of Animal Pathology of Universidad de Antioquia.

Table 1. Scale for interpretation of injury.

Scale	Interpretation of injury	Extension
1	Without injury	Not present
2	Mild injury	Focal, 15% of affected tissue
3	Mild to moderate injury	Focal, 15-35% of affected tissue
4	Moderate injury	Multifocal, 35-50% of affected tissue
5	Moderate to severe injury	Multifocal, 65-85% of affected tissue
6	Severe injury	Extensive, diffuse, 85-100% of affected tissue

Statistical analysis

To evaluate differences between groups, non-parametric Mann-Whitney test (this test was chosen because then was very low to comply a normal distribution) and repeated measure ANOVA was used. The value of $p < 0.05$ was considered statistically significant. Analyses were performed in the SPSS software (IBM, Statistic Version 20).

RESULTS

During clinical monitoring of animals, no changes in clinical or behavioral parameters of the animals or death were observed at any doses tested. In Figure 1 and Figure 2 it is shown that at doses of 2000 mg/kg the fraction induced statistically significant variations in animal weight ($p = 0.034$), this was not observed at doses of 300mg/kg ($p = 0.208$). At necropsy, no macroscopic alterations were found in the organs in any of the administered doses.

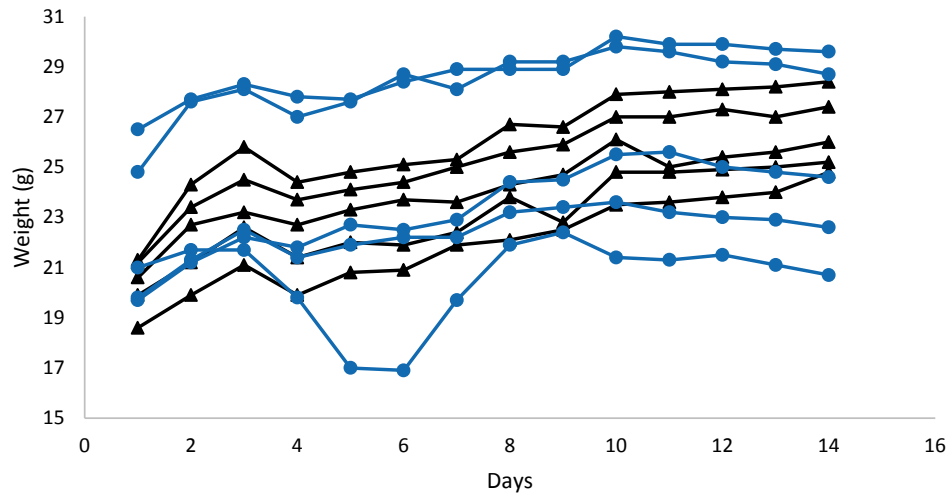


Figure 1. Body weight (g) monitored in the control animals (▲) and treated animals (●) at doses of 2000 mg/kg (n=10).

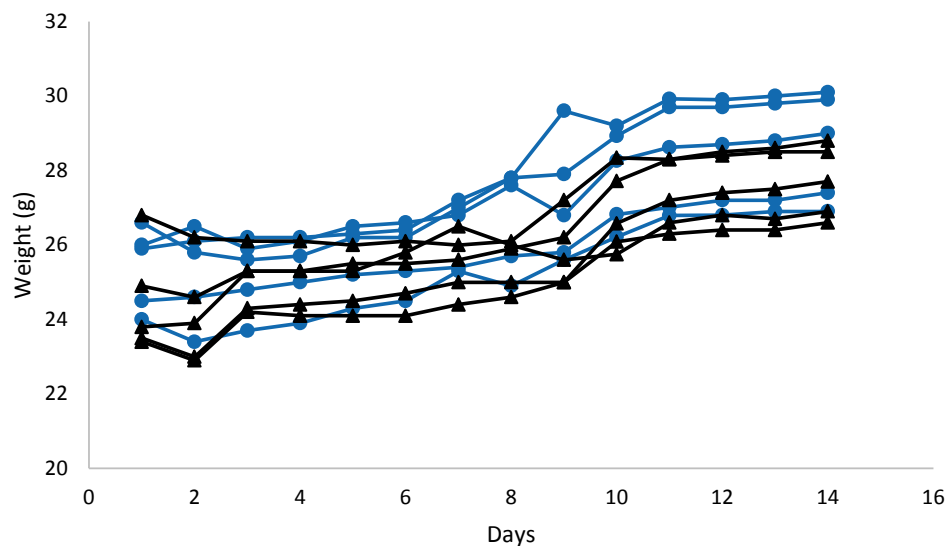


Figure 2: Body weight (g) monitored in the control animals (▲) and treated animals (●) at doses of 300 mg/kg (n=10).

Histopathological analysis

The dose of 2000 mg/kg significantly increases the karyomegaly ($p = 0.004$) and the binucleation ($p = 0.007$) of hepatocytes in all treated animals ($n = 5$) compared to controls (Figure 3). At the same dose induced mild kidney tubular necrosis in one animal and slight vacuolar degeneration; however, these lesions were not statistically significant different between groups ($p = 0.138$ and $p = 0.056$, respectively). In other organs lesions were not observed. In animals in the control group they showed no injuries. Table 2 shows the lesion on each organ and extent of histopathologic findings described.

Table 2: Histopathological findings of treated animals with Sm13-26 fraction at doses to 2000 mg/kg ($n=5$)

Organ	Histopathological findings
Liver	Karyomegaly (34% mild, 50% mild to moderate and 16% moderate) Binucleation (16% without injury, 50% mild and 34% mild to moderate)
Kidney	Mild tubular necrosis (14%) Mild tubular nephrosis (34%)
Stomach-small and large intestine-gastrocnemius-lung-spleen-brain-heart	Without injuries

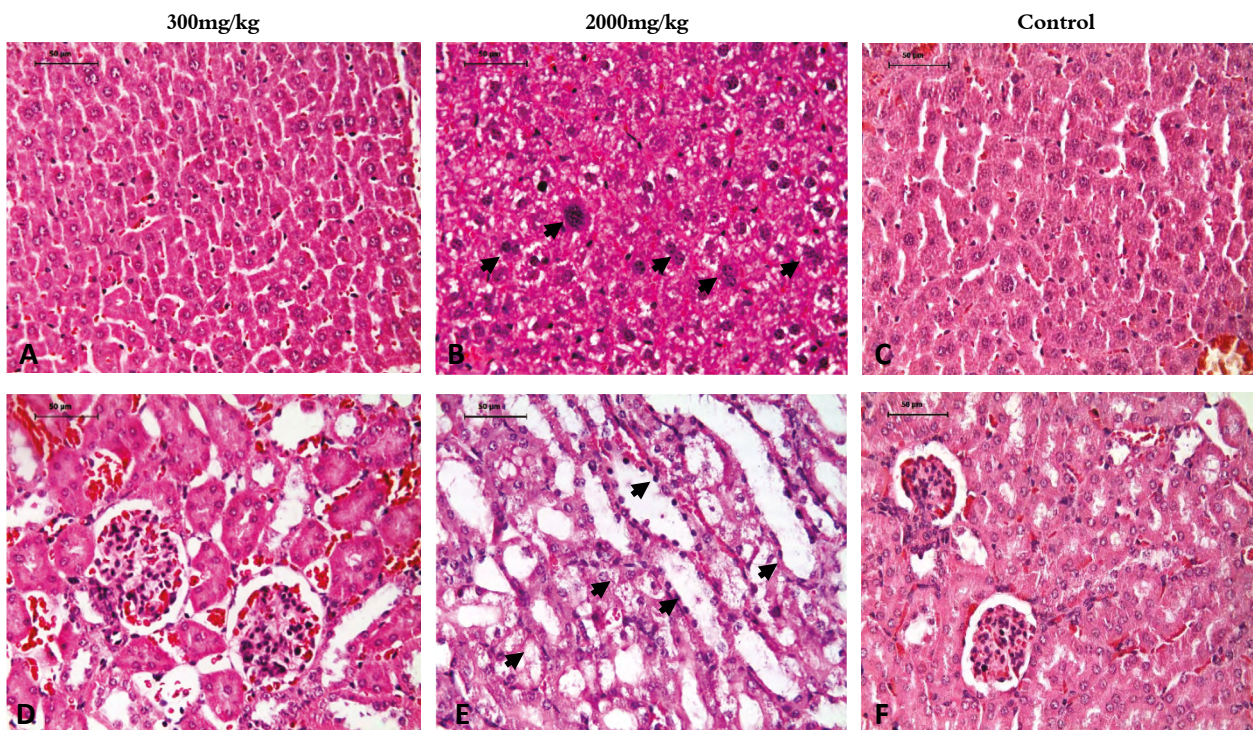


Figure 3: Detailed liver (A and B) and kidney (D and E) between the evaluated doses of Sm13-26,23 fraction. A and D: 300 mg/kg, B and E: 2000 mg/kg, C and F: Controls. In figure B arrows show karyomegaly and binucleation at 2000 mg/kg. In figure E arrows show the tubular necrosis and nephrosis. Hematoxylin-Eosin stain (H-E, 400x).

At dose of 300 mg/kg no histopathological lesions were observed in any organ of the treated animals. The control animals showed no lesion.

DISCUSSION

Although some plants have been used in folk medicine for many years is necessary evaluated the safety of them in controlled studies (22). Different plants had been report with inhibitory activity of snake venom (23, 24). However, the acute toxicity

had been evaluate for only some of them. The aqueous extract of the roots of *Aristolochia indica* protected the animals injected of Russell's viper venom and did not evidenced toxicity in animals at lower doses, but in high dose cause liver and kidney damage (25). *Renalmia alpinia* extracts provided protection against lethal effects of *B.asper* venom and had no toxic effects in mice (26). The same way *Peristrophe bivalvis* extracts with antivenom potential to *Naja kaouthia* and *Trimeresurus albolabris*, did not show toxic signs in rats (27)

The toxicity of the seed extract of various species of *Swietenia* were previously described, in a recent study of acute oral toxicity of the seed extract from *Swietenia mahagoni* in a murine model, lesions suggestive of organ toxicity at doses of 25, 200 2000, 5000 mg/kg were not observed (28). In another study which the acute oral toxicity of seed extract from *Swietenia macrophylla* in rats at doses of 2000 mg/kg was evaluated, the results showed that seeds did not produce significant differences in weight, food and water intake, biochemical and hematological parameters, or macroscopic and histopathological changes in the organs of the treated animals compared with controls (6).

In this study fraction “Sm13-16,23” derived from the ethanolic leaf extract of *S. macrophylla* did not produce death or clinical signs of acute oral toxicity in mice at doses of 2000 mg/kg and 300 mg/kg. Nevertheless, the dose of 2000 mg/kg induced variations in the weight of the animals without changes in food consumption, but no significant lesions were observed at necropsy. In the histopathological findings it increased karyomegaly and binucleation of hepatocytes when compared to the controls, and nephrosis and mild renal tubular necrosis in some of the treated animals was observed with this higher dose.

It is to consider that an increase in polyploidy of the hepatocytes can occur with age, because the number of chromosomes may increase from 16 to 32, therefore, the karyomegaly, anisokaryosis and polycaria or multinucleation are incidental findings in rodents (29). However, the increase in the multinucleation that was evidenced at the dosage of 2000 mg/kg, can be related to regenerative or degenerative conditions of the liver, while the karyomegaly or megalocytosis could be associated to the xenotoxicity caused by non-necrotizing compounds that hinder regeneration (29). The vacuolar nephrosis and renal tubular necrosis lesions are suggestive of nephrotoxicity.

In ruminants and occasionally in horses, ingestion of large amounts of polyphenols, such as tannins can cause hydrothorax, ascites, perirrenal edema, ulceration of the alimentary tract, acute tubular necrosis and death. Although in less serious injuries, adjacent groups of renal tubules with varying degrees of degeneration appear (30), which is according with our findings. In this respect, some of the metabolites responsible for the toxicity of plants are gallotannins, which are hydrolyzed to gallic acid, pyrogallol and tannic acid (30). As stated previously, the preliminary

characterization of fraction Sm13-26,23 pointed to the presence of phenolic compounds in this fraction, which is relevant considering the supporting literature for this type of compounds (15). However, in this study, we did not observe the injuries provoked by tannins poisoning in ruminants and horses, suggesting that fraction Sm13-26,23 has not a high content of tannins.

In contrast, this fraction has other polyphenols (31) as discussed above, which could have induced cellular changes. Nevertheless, in other study from leaves aqueous extract of *Swietenia* were identified nine phenolic acids and 18 flavonoids with antioxidant ability on cell culture, suggesting a cytoprotecting activity (32).

In the same way a recent study of *Swietenia macrophylla* leaves extracts, catechin was the most abundant constituent in some fractions with antioxidant and rich polyphenols (31). In other study about the toxicity of green catechins studies, showed no toxic effects in animals. Additionally, demonstrated reduced body weight in 5% (33), similar to found in our study. The results of this study are in accordance with the established by the OECD (20), fraction Sm13-26,23 did not produce toxicity at doses of 300mg/kg, indicating that the risk of acute oral toxicity is low.

CONCLUSIONS

The Fraction Sm13-16, 23 of *Swietenia macrophylla* promising in the search for inhibitors of snake venom, did not produce toxicity or lesions at doses of 300mg/kg, indicating that the acute oral toxicity risk is low.

ACKNOWLEDGMENTS

We are thankful to our colleagues in the Serpenterium, Ophidism/Scorpionism Program, and Animal Pathology Lab from the College of Agricultural Sciences. This work was possible to the funding obtained by the “Universidad de Antioquia” CODI Project 8700-170 and programa de Sostenibilidad UdeA.

CONFLICT OF INTERES DISCLOSURE

The authors declare no competing financial interest.

AUTHORS' CONTRIBUTIONS

A.H. performed acute toxicity assays, histopathological analysis and wrote the manuscript; B.R performed histopathological analysis and help with manuscript preparation; AP: Obtained the fraction of *Swietenia macrophylla* and help with manuscript preparation; TL: coordinated the obtained fraction of *S. macrophylla* and help with manuscript preparation and VN: Coordinated project, help with acute toxicity assays, and help with manuscript preparation.

REFERENCES

- Brown N, Jennings S, Clements T. The ecology, silviculture and biogeography of mahogany (*Swietenia macrophylla*): a review of the evidence. *Perspect. Plant Ecol. Evol. Syst.* 2003; 6(1-2): 37 - 49.
- Moghadamtousi SZ, Goh BH, Chan CK, Shabab T, Kadir HA. Biological activities and phytochemicals of *Swietenia macrophylla* King. *Molecules.* 2013; 18(9): 10465 - 10483.
- Maiti A, Dewanjee S, Kundu M, Mandal SC. Protective effect of methanol extract of *Swietenia macrophylla* seeds on oxidative states associated with *streptozotocin* induced diabetic rats. *Nat. Prod. Sci.* 2007; 13(4): 295 - 299.
- Maiti A, Dewanjee S, Mandal SC. *In vivo* evaluation of anti-diarrhoeal activity of the seeds of *Swietenia macrophylla* King (Meliaceae). *Trop. J Pharm. Res.* 2007; 6: 711-716.
- Maiti A, Dewanjee S, Subhash CM, Annadurai S. Exploration of antimicrobial potential of methanol and water extract of seeds of *Swietenia macrophylla* (Family: Meliaceae). *Iranian J Pharmacol. Ther.* 2007; 6(2): 99-102.
- Balijepalli MK, Suppaiah V, Chin A, Buru AS, Sagineedu SR, Pichika MR. Acute oral toxicity studies of *Swietenia macrophylla* seeds in Sprague Dawley rats. *Pharmacognosy Res.* 2015; 7(1): 38-44. doi:10.4103/0974-8490.147197.
- Cheng YB, Chien YT, Lee JC, Tseng CK, Wang HC, Lo IW, et al. Limonoids from the Seeds of *Swietenia macrophylla* with Inhibitory Activity against Dengue Virus 2. *J Nat. Prod.* 2014; 77(11): 2367-2374.
- Mootoo BS, Ali A, Motilal R, Pingal R, Ramlal A, Khan A, et al. Limonoids from *Swietenia macrophylla* and *S. aubrevilleana*. *J Nat. Prod.* 1999; 62(11): 1514-1517.
- Falah S, Suzuki T, Katayama T. Chemical constituents from *Swietenia macrophylla* and their antioxidant activity. *Pak. J Biol. Sci.* 2008; 11(16): 2007-2012.
- Tan SK, Osman H, Wong KC, Boey PL. New phragmalin-type limonoids from *Swietenia macrophylla* King. *Food Chem.* 2009; 115(4): 1279-1285.
- El Zalabani SM, El-Askary HI, Mousa OM, Issa MY, Zaitoun AA, Abdel-Sattar E. Acaricidal activity of *Swietenia mahogani* and *Swietenia macrophylla* ethanolic extracts against *Varroa destructor* honeybee colonies. *Exp. Parasitol.* 2012; 130(2): 166-170.
- Pereañez A, Núñez V, Patiño AC, Londoño M, Quintana JC. Inhibitory effects of plant phenolic compounds on enzymatic and cytotoxic activities induced by a snake venom phospholipase A₂. *Vitae.* 2011; 18(3): 295-304.
- Pereañez A, Lobo-Echeverri T, Rojano B, Vargas L, Fernández M, Gaviria CA, et al. Correlation of the inhibitory activity of phospholipase A₂ snake venom and the antioxidant activity of Colombian plant extracts. *Braz. J. Pharmacog.* 2010; 20(6): 910-916.
- Lindahl M, Tagesson C. Flavonoids as phospholipase A₂ inhibitors: importance of their structure for selective inhibition of group II phospholipase A₂. *Inflammation.* 1997; 21(3): 347-356.
- Pereañez A, Núñez V, Rojano B, Lobo-Echeverri T. Inhibitory effects of *Swietenia macrophylla* on myotoxic phospholipases A₂. *Rev. Bras. Farmacogn.* 2013; 23(6): 885-894.
- Pithayanukul P, Leanpolchareanchai J, Bavovada R. Inhibitory effect of tea polyphenols on local tissue damage induced by snake venoms. *Phytother. Res.* 2010; 24(4): 56-62.
- Xu SF, Zou B, Yang J, Yao P, Li CM. Characterization of a highly polymeric proanthocyanidin fraction from persimmon pulp with strong Chinese cobra PLA₂ inhibition effects. *Fitoterapia.* 2012; 83(1): 153-160.
- Zhang Y, Zhong L, Zhou B, Chen JY, Li CM. Interaction of characteristic structural elements of persimmon tannin with Chinese cobra PLA₂. *Toxicon.* 2013; 74: 34-43.
- Mourão de Moura V, Serra Bezerra AN, Veras Mourão RH, Varjão Lameiras JL, Almeida Raposo JD, Luckwu de Sousa R, et al. A comparison of the ability of *Bellucia dichotoma* Cogn. (Melastomataceae) extract to inhibit the local effects of *Bothrops atrox* venom when pre-incubated and when used according to traditional methods. *Toxicon.* 2014; 85: 59-68.
- Guidelines for testing of chemical. Guideline 423, acute oral toxicity- acute toxic class method. Organization for Economic Cooperation and Development, Paris. 2001.
- García del Moral R. Manual de Laboratorio de Anatomía Patológica. Madrid, España: McGraw-Hill/Interamericana; 1993. 450 p.
- Stohs SJ. Safety and efficacy of Bixa orellana (Achiote, Annatto) leaf extracts. *Phytother. Res.* 2014; 28(7):956-60.
- Soares AM, Tieli FK, Marcussi S, Lourenço MV, Januário AH, Sampaio SV, Giglio JR, Lomonte B, Pereira PS. Medicinal plants with inhibitory properties against snake venoms. *Curr Med Chem.* 2005; 12(22): 2625-41.
- Sánchez EE, Rodríguez-Acosta A. Inhibitors of snake and development of new therapeutics. *Immunopharmacol Immunotoxicol.* 2008; 30(4): 647-78.
- Bhattacherjee P, Bhattacherjee D. Characterization of the aqueous extract of the root of *Aristolochia indica*: evaluation of its traditional use as an antidote for snake bites. *J Ethnopharmacology.* 2013; 145(1): 220-6.
- Patiño AC, López J, Aristizábal M, Quintana JC, Benjumea D. Evaluation of the inhibitory effect of extracts from leaves of *Renalmia alpinia* Rottb. Maas (Zingiberaceae) on the venom of *Bothrops asper* (mapana). *Biomedica.* 2012; 32(3): 365-74.
- Phaopongthai J, Noiphrom J, Phaopongthai S, Pakmancee N, Sichaem J. Biological activities of *Peristrophe bivalvis* extracts: promising potential for anti-snake venoms against *Naja Kaoutia* and *Trimeresurus albovenoms*. *Nat Prod Res.* 2016; 30(6): 697-9.
- Naveen YP, Divya Rupini G, Ahmed F, Urooj A. Pharmacological effects and active phytoconstituents of *Swietenia mahagoni*: a review. *J Integr. Med.* 2014; 12(2): 86-93.
- Percy DH, Barthold SW. Pathology of laboratory rodents and rabbits 3rd ed. Iowa, USA: Blackwell Publishing; 2007. 325 p.
- Maxie MG, Jubb KVF, Kennedy PC, Palmer N. Jubb, Kennedy and Palmer's Pathology of Domestic Animals 5th ed Vol 2. St Louis, USA: Elsevier Saunders; 2016. 654 p.
- Preciado L, Lobo-Echeverri T, Pereañez JA, Zapata K and Rojano B. Antioxidants from three *Swietenia* Species (Meliaceae). *Journal of Medicinal Plants Research.* 2016; 10(2): 8-17.
- Pamplona S, Sá P, Lopes D, Costa E, Yamada, Silva C. In Vitro Cytoprotective Effects and Antioxidant Capacity of Phenolic Compounds from the Leaves of *Swietenia macrophylla*. *Molecules* 2015; 20(10): 18777-88.
- Takami S, Imai T, Hasumura M, Cho YM, Onose J, Hirose M. Evaluation of toxicity of green tea catechins with 90-day dietary administration to F344 rats. *Food and Chemical Toxicology.* 2008; 46(6): 2222-24.